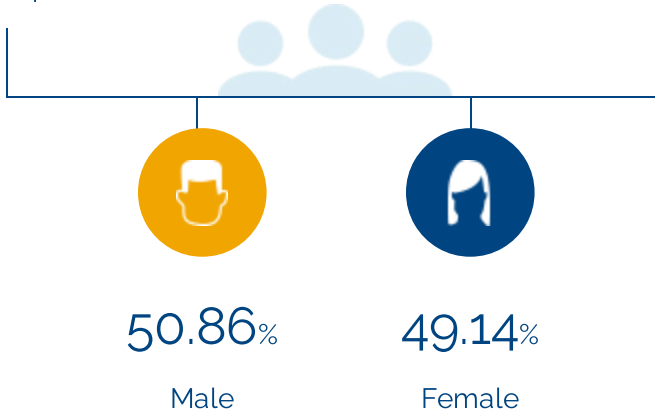


People

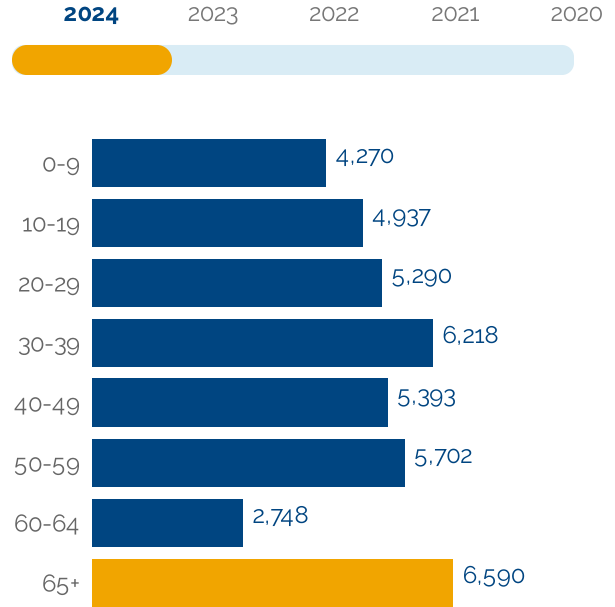
The total population of Marlborough is 42,513. The median age is 38.92

42,513

Total Population



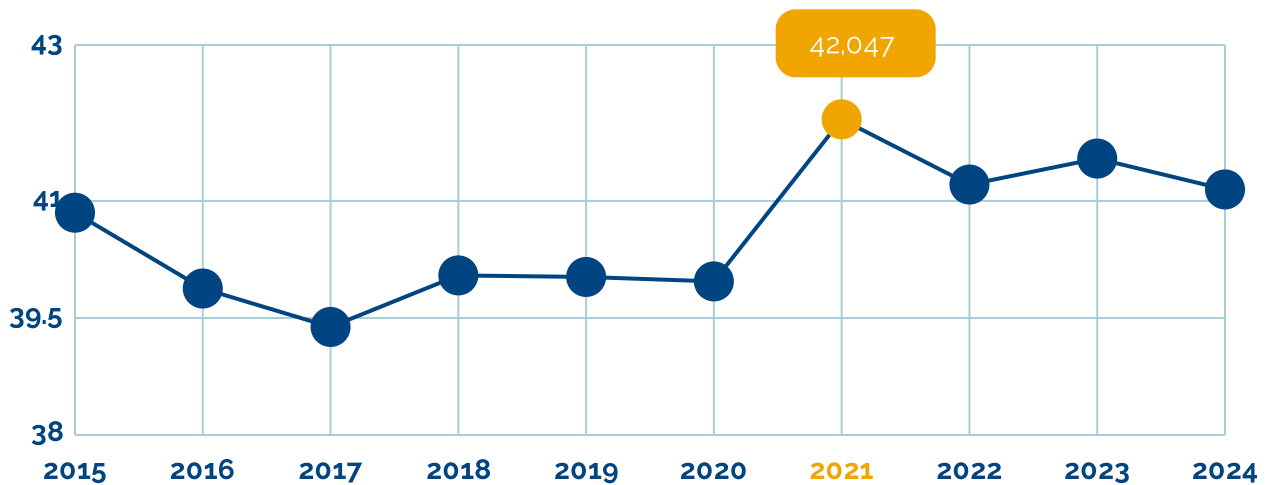
Age Distribution



Median Age

39

Population Growth (in thousands)



Educational Attainment

50.08% of the population in Marlborough have an associate's degree or higher. 89.85% have a high school degree or higher.



< Grade 9

4.57%



Grade 9-12

5.57%



High School

26.21%



Some College

13.56%



Assoc Degree

7.25%



Bach Degree

24.04%



Grad Degree

18.79%



offer associate's Degree or Certificate



offer Bachelor's Degree or Higher

Labor Force

Marlborough has a labor force of 25,993 people, with an unemployment rate of 4.1%.

25,993

Labor Force

4.1%

Unemployment Rate

▲ 0.8%

Unemployment Rate
Change (1 year)

Talent

What are the largest job counts by occupation?

Executive,
Managers, and
Administrators



16.39%

5,245

Sales



8.9%

2,847

Business and
Financial
Operations



8.8%

2,815

Office and
Administrative
support



8.45%

2,702

Computer and
mathematical
occupations

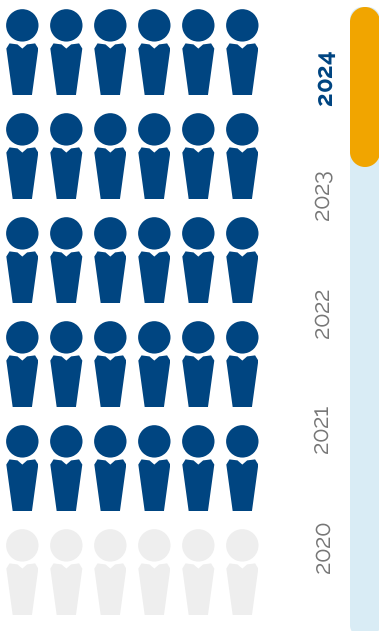


6.88%

2,200

Total Employees

34,204



The work distribution of total employees in Marlborough is:



24%

Blue Collar



75%

White Collar

Total Establishments

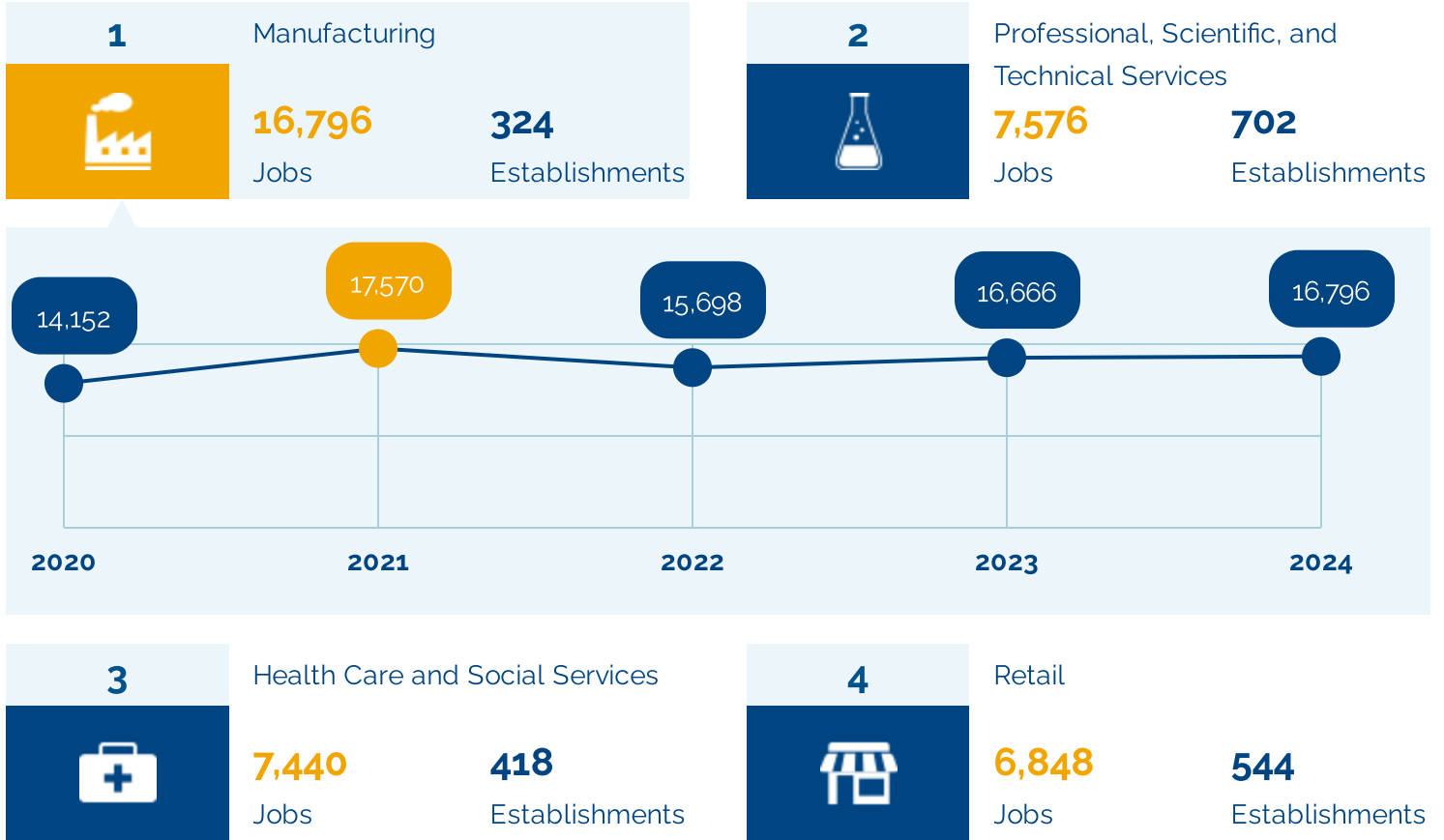
2,486



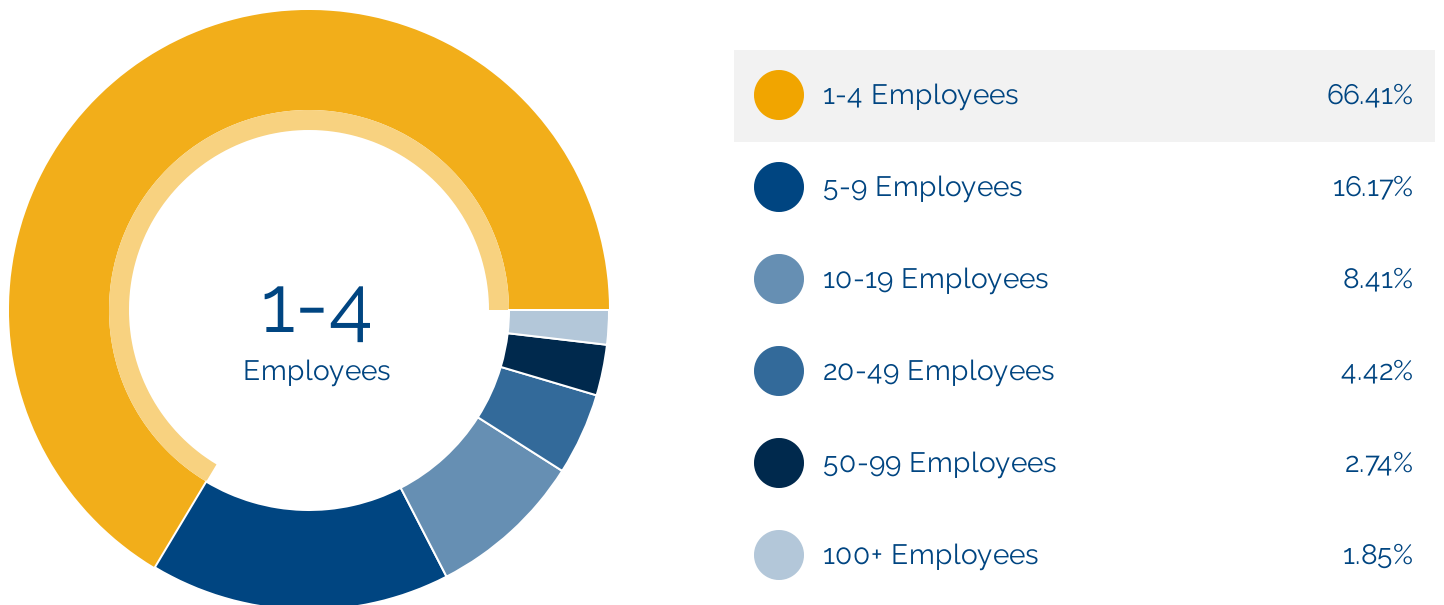
Businesses and Jobs

Marlborough has a total of 2,486 businesses. In 2024, the leading industries in Marlborough were Manufacturing, Professional, Scientific, and Technical Services, Health Care and Social Services, and Retail.

What are the top industries by jobs?



How many employees do businesses in Marlborough have?



Income and Spending

Households in Marlborough earn a median yearly income of \$104,733. 51.91% of the households earn more than the national average each year. Household expenditures average \$117,627 per year. The majority of earnings get spent on Tax and Retirement (Total), Shelter (Total), Transportation (Total), Grocery (Total), and Entertainment (Total).

\$104,733

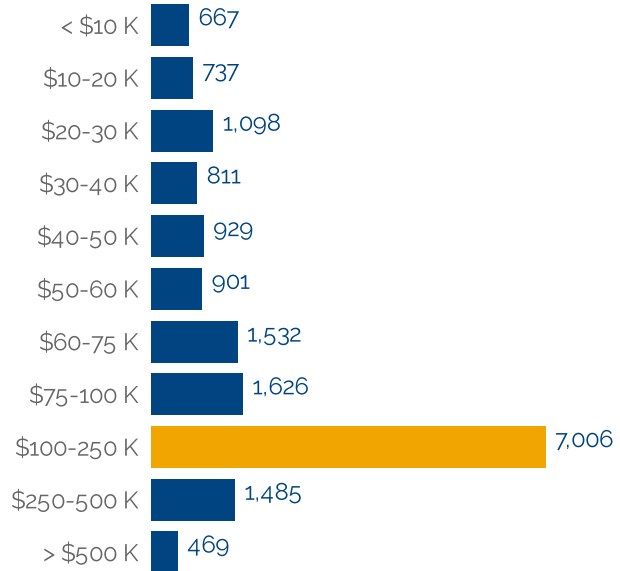
Median Household Income

22% less than the county

2% less than the state

28% more than the nation

Income Distribution



How do people spend most of their money?

PER HOUSEHOLD

Tax and Retirement (Total)



\$33,096

Shelter (Total)



\$18,756

Transportation (Total)



\$16,826

Grocery (Total)



\$7,062

Entertainment (Total)



\$6,614

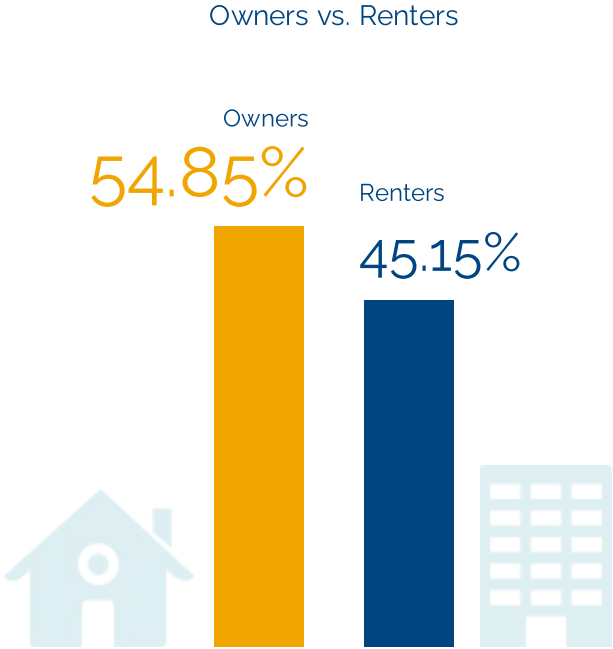


\$117,627

Average Household Expenditure

Housing

There are 10% more households who own their homes than there are renters.



Transportation

Residents spend an average of 28 minutes commuting to work. Marlborough is served by 27 airports within 50 miles. Rail can be accessed within the community. Interstates can be accessed within the community.



28min

Commute Travel Time



1 + 27(+50 miles)

Airports in Community



Interstate

In Community



Freight Rail

In Community

Taxes

Top State Corporate Income Tax

8%

Top State Corporate Capital Gains Tax

8%

Top State Personal Income Tax

5.15%

Top State Personal Capital Gains Tax

5.2%

State Sales Tax

6.25%